



13 Cooper Road, Guildford GU1 3LY



COLLINS
Independent Estate Agent





13 Cooper Road Guildford GU1 3LY

£499,995

Freehold

A fine example of a totally refurbished Victorian Terraced house in the popular upper High Street conservation area of Charlottetown, just a short walk to Pewley Downs. My client purchased the cottage in need of total modernisation in 2015 when the meticulous renovation commenced. This included the rewiring and re plumbing using the existing combination boiler with new cast iron radiators controlled by a Nest system. Cosy underfloor heating was also added to the kitchen and wet room. The whole house was also re plastered and hand made sash double glazed windows added to the front elevation with a smart new bespoke door, in line with conservation planning requirements. The lovely "Handmade Kitchen of Christchurch" is stylish and modern with integrated fridge, oven, gas hob and electric oven. Other features to this immaculate home include high ceilings, a fireplace to the sitting room and a pretty cottage garden with a connecting residents only path way providing rear access.



- Renovated Victorian Terrace
- Conservation area
- Close to Downs and Upper High Street
- Two bedrooms
- Two reception rooms
- Refitted kitchen
- Wet room and en suite bathroom
- Pretty cottage style garden
- EPC - D





Cooper Rd is a truly unique place to settle in Guildford town with its strong Charlottesville community spirit, proud heritage and most convenient position for excellent schooling, commuting, leisure and the High Street. Miles of beautiful protected countryside walks and spectacular views are found a few minutes away by foot on Pewley Down. From this location you can walk to school, the shops, the station, restaurants and bars. This is a very special place to live.



COLLINS

Independent Estate Agent

Parallel House, 32 London Road
Guildford, Surrey GU1 2AB

Telephone | 01483 230 473
info@collinsguildford.co.uk

www.collinsguildford.co.uk



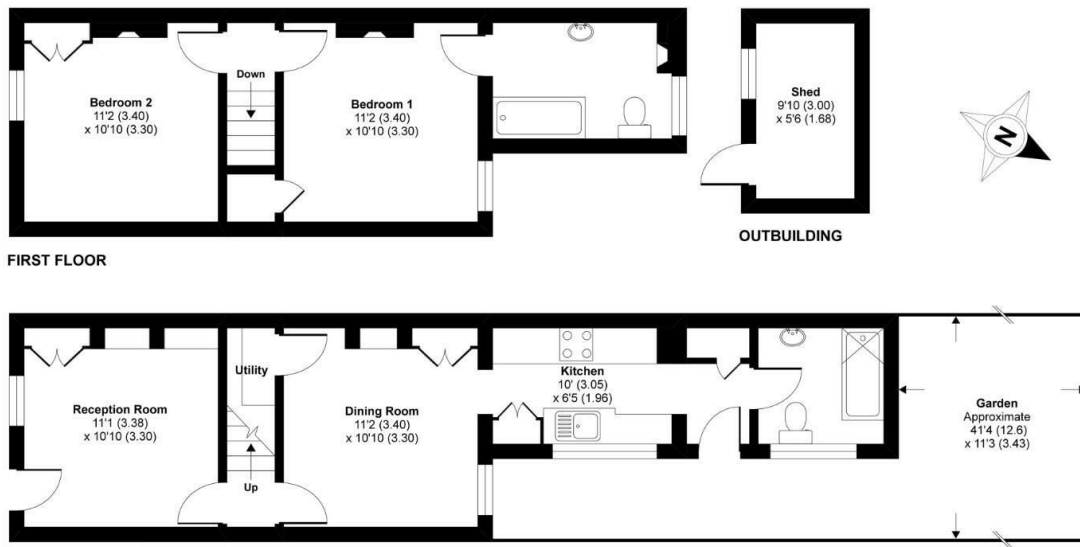
Cooper Road, Guildford, GU1

Approximate Area = 783 sq ft / 72.7 sq m

Outbuilding = 54 sq ft / 5 sq m

Total = 837 sq ft / 77.7 sq m

For identification only - Not to scale



FIRST FLOOR

OUTBUILDING

GROUND FLOOR



Certified
Property
Measurer

Floor plan produced in accordance with RICS Property Measurement Standards incorporating International Property Measurement Standards (IPMS2 Residential). © nichecom 2020. Produced for Mark Collins (Guildford) Limited. REF: 637988



Important Notice To Purchasers : We endeavour to make our sales particulars accurate and reliable, however they do not constitute or form part of an offer or any contract and none is to be relied upon as statements of representation or fact. The services and appliances listed in this specification have not been tested by us and no guarantees as to their operating ability or efficiency are given. All measurements have been taken as a guide to prospective buyers only, and are not precise. If you require clarification on further information on any points, please contact us, especially if you are travelling some distance to view.